



FRENCH-OWNED COMPANY  
WITH MANUFACTURING OPERATIONS IN CHINA

# CATALOGUE

## 2025

Sino Concept is a French-owned and operated manufacturing group specialising in the production of steel, rubber, and plastic products.



 [www.sinoconcept.co.uk](http://www.sinoconcept.co.uk)

 [contact@sinoconcept.co.uk](mailto:contact@sinoconcept.co.uk)

# CONTENTS

Durable & Reliable



## ROAD & TRAFFIC SAFETY DEVICES

SPEED CUSHIONS .....	04
LANE DIVIDERS .....	06
GLASS ROAD STUDS .....	06
ALUMINIUM ROAD STUDS .....	08
RUBBER-BASED ROAD STUDS .....	08
PLASTIC ROAD STUDS .....	08
STEEL BASED ROAD STUDS .....	08



## CAR PARK SAFETY MANAGEMENT

SPEED BUMPS .....	10
ONE-PART SPEED BUMPS .....	12
SPEED HUMPS .....	12
WHEEL STOPS .....	13
HGV WHEEL STOPS .....	15
FLOOR BIKE RACKS .....	16
PARKING SPACE LOCK BARRIERS .....	18
LAMP POST PROTECTOR HOOPS .....	18
POLE AND COLUMN PROTECTORS .....	18
HOOPED PERIMETER BARRIERS .....	18



## TRAFFIC CONTROL EQUIPMENT

TRAFFIC SAFETY CONES .....	20
METAL ROADWORKS BEACONS (K5B) .....	22
PLASTIC ROADWORKS BEACONS (K5C) .....	22
SCANDINAVIAN DELINEATOR PANELS .....	23
BALLAST SANDBAGS .....	23
EXPANDABLE STEEL BARRIERS .....	24
MANHOLE SAFETY BARRIERS .....	24



## EVENT MANAGEMENT

CABLE RAMPS .....	26
AMS CABLE RAMP .....	28
CABLE PROTECTOR RAMPS - 1200MM .....	30
HOSE PROTECTOR RAMPS .....	30
DROP OVERS .....	31
FLOOR CABLE COVERS .....	31
CROWD CONTROL BARRIERS .....	32
CROWD BARRIER STILLAGE .....	32

# Road and Traffic Safety Devices

SPEED CUSHIONS .....	04
LANE DIVIDERS .....	06
GLASS ROAD STUDS .....	06
ALUMINIUM ROAD STUDS .....	08
RUBBER-BASED ROAD STUDS .....	08
PLASTIC ROAD STUDS .....	08
STEEL BASED ROAD STUDS .....	08

## ■ SPEED CUSHIONS



**Durable and Eco-Friendly:** Speed cushions made from premium recycled material, a mix of plastic and rubber, REACH compliant, UV-resistant, and weatherproof. Provides long-lasting protection, ideal for mid-sized parking areas.

### ✂ ACCESSORIES:



Anti-Slip UV-Resistant Heavy-Duty

**SKIDPROOF SURFACE**  
Non-slip surface for better grip.

**AVAILABLE IN BLACK**  
Other colours on request.

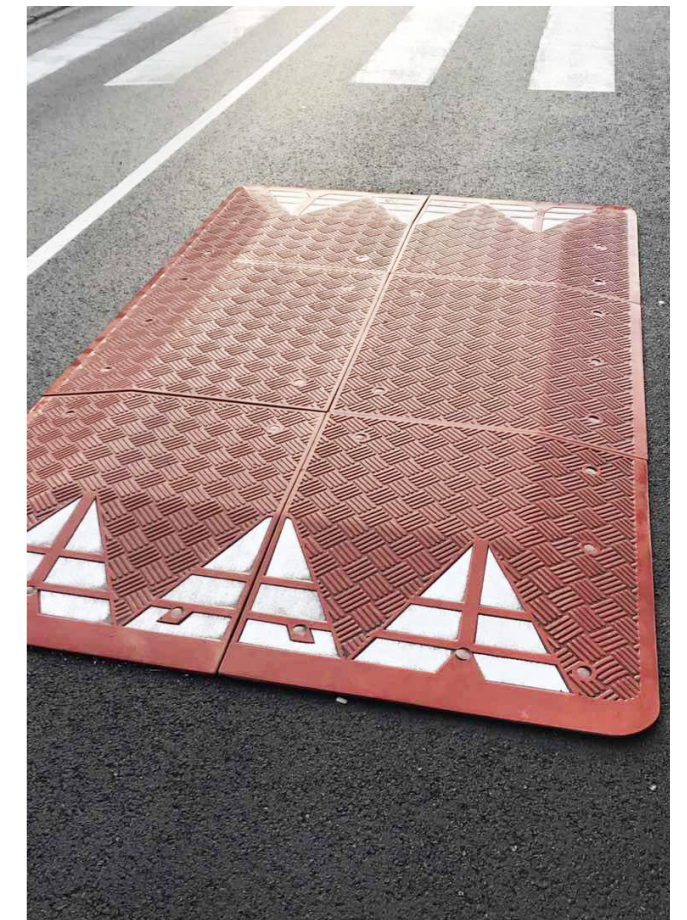
**THERMOPLASTIC REFLECTIVE ROAD MARKING FILMS**  
Embedded thick thermoplastic reflective road marking films to enhance visibility and safety.

**COMPANY NAME OR LOGO**  
Can be moulded-in for easy identification.

**HEAVY-DUTY HARDWARE**  
Premium-quality screws and plastic anchors – rust-proof and highly durable.

**CUSTOM-MADE PACKING**  
Designed for international shipping and easy storage and delivery.

TYPE	DIMENSIONS (L*W*H)
4 Parts (2 right corners + 2 left corners)	2000 x 1800 x 65 mm (6.56' x 5.9' x 2.56')
6 Parts (2 right corners + 2 left corners + 2 middle parts)	3000 x 1800 x 65 mm (9.84' x 5.9' x 2.56')



## LANE DIVIDERS



### ACCESSORIES:



M12 Coach Screws, PE Plastic Anchors



PE Plastic caps



#### PLASTIC-RUBBER COMPOSITE

Cost-effective, UV-resistant, and very sturdy.



#### THERMOPLASTIC REFLECTIVE ROAD MARKING FILMS

Embedded thick thermoplastic reflective road marking films to enhance visibility and safety.



#### 360° SOLID GLASS ROAD STUD (PREMIUM VERSION)

Improves the strength and the stability, prevents disconnection and makes the installation easier.



#### AVAILABLE IN BLACK

Other colours on request.

TYPE	DIMENSIONS (L*W*H)	GLASS ROAD STUDS
Eco (without road stud)	1000 x 130 x 50 mm (3.3' x 5" x 2")	/
Premium (with road stud)	1000 x 130 x 50 mm (3.3' x 5" x 2")	Ø 50 mm (Ø1.97")

## GLASS ROAD STUDS



#### TEMPERED GLASS CONSTRUCTION

Durable, long-lasting with excellent performance after installation.



#### AVAILABLE IN VARIOUS COLOURS

Different colours to improve visibility in various environments.



#### 360° VISIBILITY

Ensures complete visibility of road obstacles, which are often the cause of accidents.

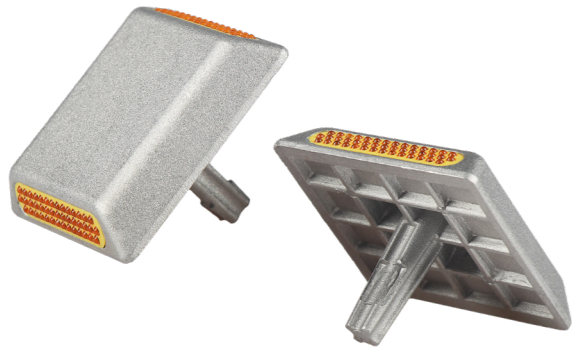


#### EN1463 STANDARDS COMPLIANT

Meets the EN1463 safety standards.

TYPE	DIFFERENCE	DIMENSIONS (D*H)
Glass road stud - Small	Recycled rubber for the base	Ø 50 x 55 mm (2" x 2.2")
Glass road stud - Large	Only tempered glass	Ø 100 x 50 mm (4" x 2")





**ALUMINIUM ROAD STUDS**

TYPE	DIMENSIONS (L*W*H)	MAX. LOAD
Heavy-duty	100 x 100 x 75 mm (4" x 4" x 3")	20 to 30 tons
Standard	100 x 100 x 75 mm (4" x 4" x 3")	10 tons



**PLASTIC ROAD STUDS**

DIMENSIONS (L*W*H)	MAX. LOAD
100 x 100 x 20 mm (4" x 4" x 0.8")	5 to 10 tons



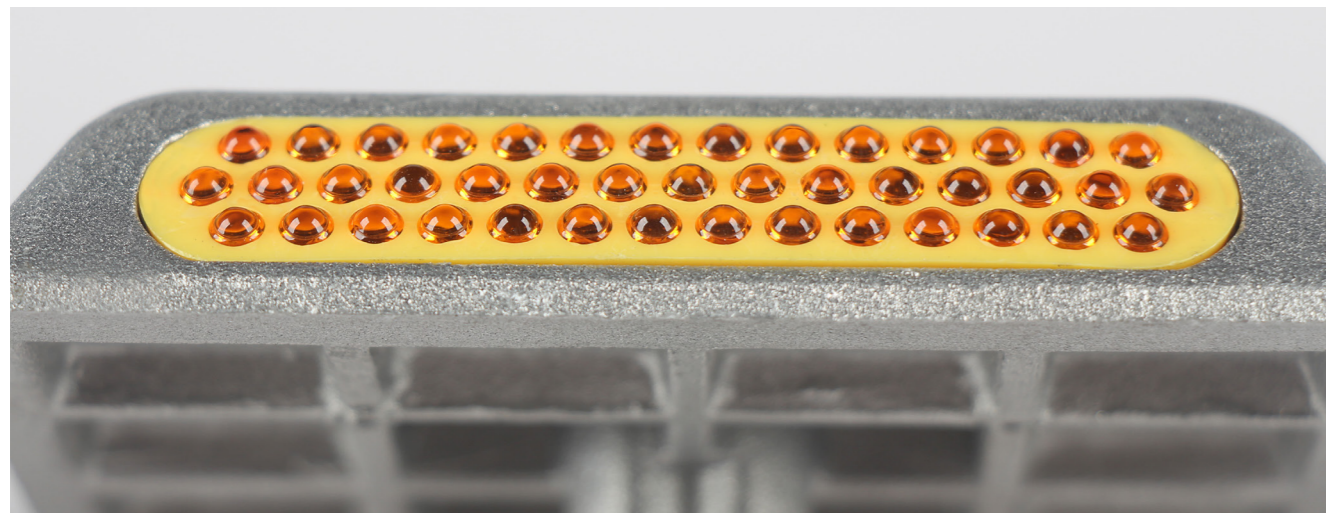
**RUBBER-BASED ROAD STUDS**

DIMENSIONS (H*W*T)
155 x 95 x 62 mm (6.1" x 3.7" x 2.4")



**STEEL BASED ROAD STUDS**

TYPE	DIMENSIONS (L*W*H)
One side	110 x 50 x 70 mm (4.3" x 2" x 2.8")
Two sides	120 x 50 x 70 mm (4.7" x 2" x 2.8")



# Car Park Safety Management

- SPEED BUMPS ..... 10
- ONE-PART SPEED BUMPS..... 12
- SPEED HUMPS ..... 12
- WHEEL STOPS ..... 13
- HGV WHEEL STOPS ..... 15
- FLOOR BIKE RACKS..... 16
- PARKING SPACE LOCK BARRIERS ..... 18
- LAMP POST PROTECTOR HOOPS ..... 18
- POLE AND COLUMN PROTECTORS ..... 18
- HOOPED PERIMETER BARRIERS ..... 18

## ■ SPEED BUMPS



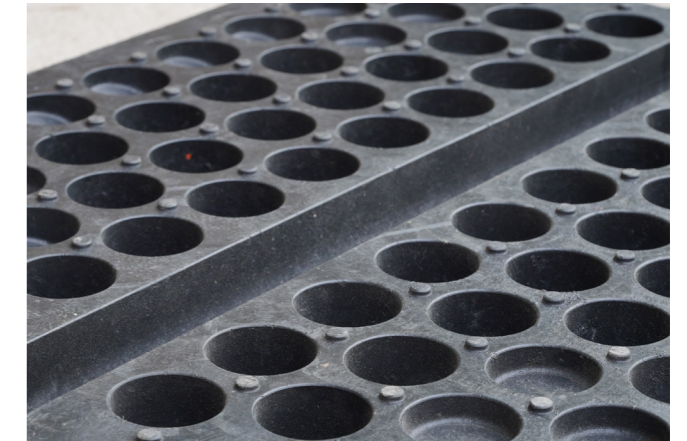
**1. Standard version:** Suitable for light vehicles and light utility vehicles under normal usage conditions. Maximum Load Capacity: 20 tons per axle.

**2. Heavy-duty version:** Suitable for light utility vehicles, with enhanced durability. Maximum Load Capacity: 25 tons per axle.

### ✂ PARTS & ACCESSORIES:



HEIGHT	PART	DIMENSIONS (L*W*H)	MAX. CABLE DIAMETER
50 mm	Middle part	500 x 350 x 50 mm (20' x 14" x 2")	Ø 30 mm (Ø 1.18")
50 mm	End cap	250 x 350 x 50 mm (10" x 14" x 2")	Ø 30 mm (Ø 1.18")
70 mm	Middle part	500 x 400 x 70 mm (20' x 16" x 2.76")	Ø 35 mm (Ø 1.38")
70 mm	End cap	250 x 400 x 70 mm (10" x 16" x 2.76")	Ø 35 mm (Ø 1.38")



**YELLOW MOULDED-IN COVER**  
Built into the speed bump to stay bright with no peeling or fading. Yellow stays yellow.

**INTERLOCKING SYSTEM**  
Male and female connectors to prevent movement and allow quick installation.

**2-IN-1 PRODUCT**  
Built-in channels for cable protection.

**180° GLASS BEAD REFLECTORS**  
Highly visible in all conditions.



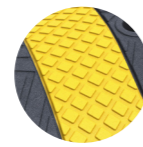
## ONE-PART SPEED BUMPS



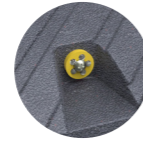
20 km/h



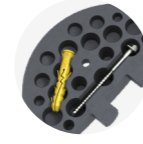
### PARTS / ACCESSORIES:



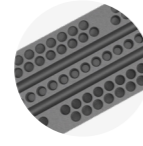
**SKIDPROOF SURFACE**  
Non-slip surface for better grip.



**180° GLASS BEAD REFLECTORS**  
Highly visible in all conditions.



**BUILT-IN COMPARTMENT**  
Screws and anchors stored underneath for easy setup.



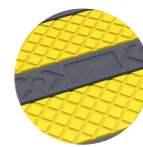
**2-IN-1 PRODUCT**  
Built-in channels for cable protection.

TYPE	DIMENSIONS (L*W*H)	MAX. CABLE DIAMETER
Middle part	1830 x 300 x 50 mm (6' x 12" x 2")	Ø 30 mm (Ø 1.18")
End cap	150 x 300 x 50 mm (6" x 12" x 2")	/

## SPEED HUMPS



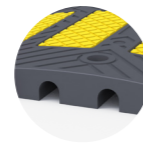
### PARTS / ACCESSORIES:



**SKIDPROOF SURFACE**  
Non-slip surface for better grip.



**INTERLOCKING SYSTEM**  
Male and female connectors to prevent movement and allow quick installation.



**2-IN-1 PRODUCT**  
Built-in channels for cable protection.

HEIGHT	MIDDLE SECTION DIMENSIONS (L*W*H)	END CAP DIMENSIONS (L*W*H)	MAX. CABLE DIAMETER
30 mm (1.2")	500 x 600 x 30 mm (20" x 24" x 1.18")	250 x 600 x 30 mm (10" x 24" x 1.18")	/
50 mm (2")	500 x 600 x 50 mm (20" x 24" x 1.97")	250 x 600 x 50 mm (10" x 24" x 1.97")	2 x Ø 30 mm (Ø 1.18")
50 mm (2")	500 x 900 x 50 mm (20" x 35" x 1.97")	250 x 900 x 50 mm (10" x 35" x 1.97")	2 x Ø 30 mm (Ø 1.18")
70 mm (3")	500 x 900 x 70 mm (20" x 35" x 2.76")	250 x 900 x 70 mm (10" x 35" x 2.76")	2 x Ø 45 mm (Ø 1.77")
70 mm (3")	500 x 1200 x 70 mm (20" x 47" x 2.76")	250 x 1200 x 70 mm (10" x 47" x 2.76")	2 x Ø 45 mm (Ø 1.77")

## WHEEL STOPS

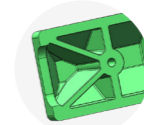


### ACCESSORIES:

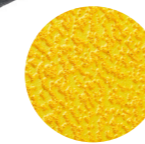


**Durable and Eco-Friendly:** Car Park Wheel Stop made from premium recycled material, a mix of plastic and rubber, REACH compliant, UV-resistant, weatherproof, and free from unpleasant odours, ensuring long-lasting protection and reducing costs.

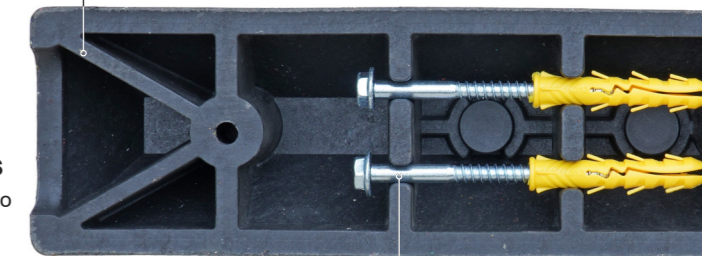
TYPE	DIMENSIONS (L*W*H)	REFLECTIVE FILM COLOUR
550 mm (2')	550 x 150 x 100 mm (2' x 6" x 4")	Yellow, white
900 mm (3')	900 x 150 x 100 mm (3' x 6" x 4")	Yellow, white
1220 mm (4')	1220 x 150 x 100 mm (4' x 6" x 4")	Yellow, white
1830 mm (6')	1830 x 150 x 100 mm (6' x 6" x 4")	Yellow, white



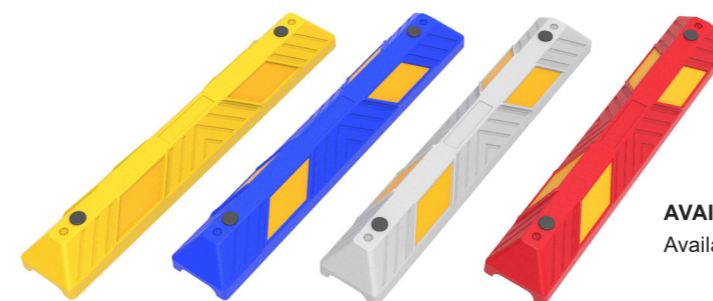
**HEAVY-DUTY STRUCTURE**  
Thick walls and V-shaped ribs for maximum strength in tough conditions.



**THERMOPLASTIC REFLECTIVE ROAD MARKING FILMS**  
Embedded thick thermoplastic reflective road marking films to enhance visibility and safety.



**BUILT-IN COMPARTMENT**  
Screws, anchors, and caps stored underneath for easy setup.



**AVAILABLE IN MORE COLOURS**  
Available colours: Yellow, blue, white, red, etc.



## ■ HGV WHEEL STOPS



**Durable and Eco-Friendly:** HGV wheel stop made from premium recycled material, a mix of plastic and rubber, REACH compliant, UV-resistant, weatherproof, and free from unpleasant odours, ensuring long-lasting protection and reducing costs.

✂️ **ACCESSORIES:**



M12 Coach  
Screws, PE  
Plastic Anchors

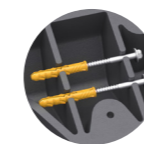


**MATERIAL**

Plastic-Rubber composite

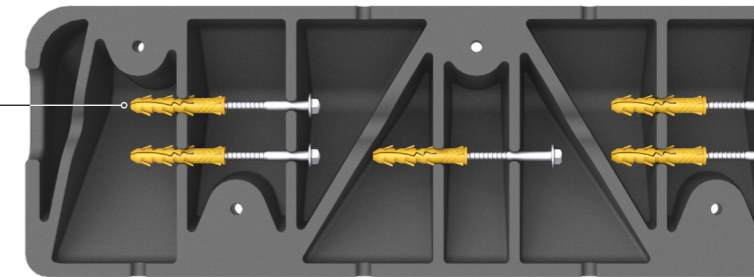
**DIMENSIONS (L\*W\*H)**

1000 x 300 x 150 mm (39.4" x 11.8" x 5.9")



**BUILT-IN COMPARTMENT**

Screws and anchors stored underneath for easy setup.

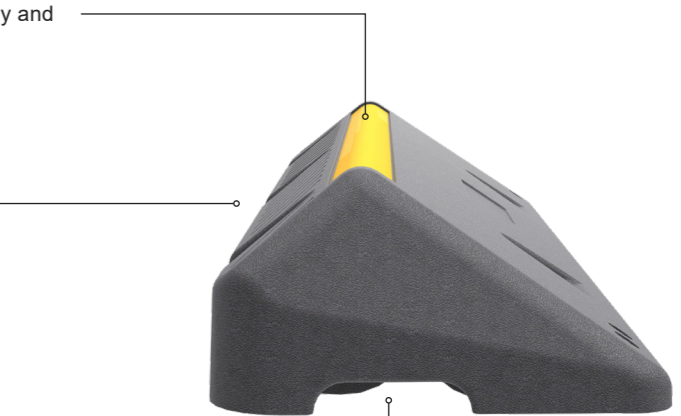
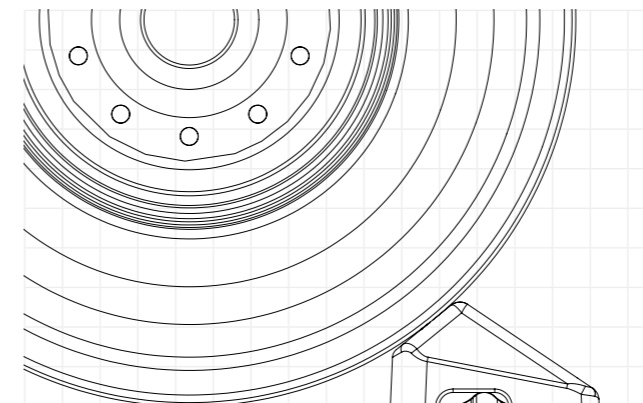


**INTEGRATED HIGH-VISIBILITY MARKING**

Mould-in yellow marking for enhanced visibility and safety.

**EFFICIENT IMPACT DISTRIBUTION**

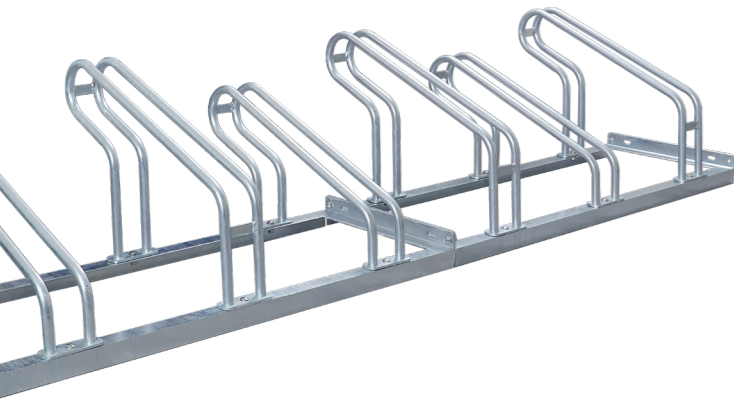
Full-surface contact for stability and even impact distribution for durability.



**CONVENIENT HANDLES**  
Easy to carry and to install.



## FLOOR BIKE RACKS



### HOT-DIP GALVANISED FINISH (MINIMUM 80 MICRONS)

Highly corrosion-resistant treatment that prevents rust.



### SPACE-SAVING

Low and high hoops save space for bike parking.



### LOCKABLE OPTIONS

Bikes frames can be locked on both 450 & 460 types.



### CUSTOM-MADE PACKING

Designed for international shipping and easy storage and delivery.

### OPTIONAL ACCESSORIES:



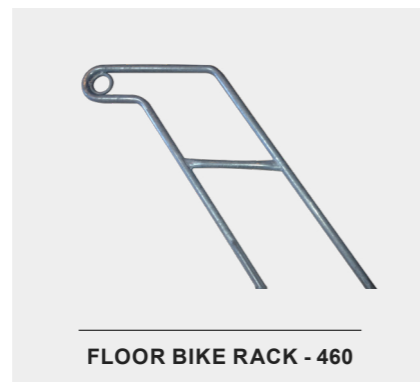
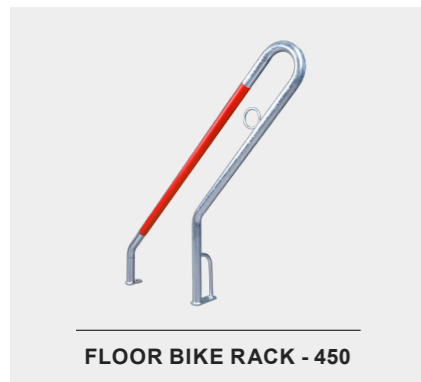
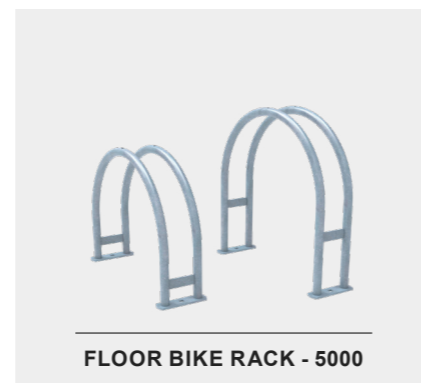
Ground Spike



Flange Locknuts



90° Angle



TYPE	TUBE DIAMETER	MAX. TYRE WIDTH
2000, 4000, 5000	Ø 18 mm (Ø 0.7")	45 mm (1.8")

TYPE	AVAILABLE LENGTHS	WIDTH
BASE	700 mm (27.6"), 1000 mm (39.4"), 1050 mm (41.3"), 1100 mm (43.3"), etc	395 mm (15.6")

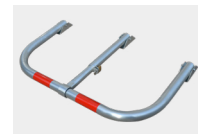




### ■ PARKING SPACE LOCK BARRIERS

**Material:** Mild steel tube.

**Surface Treatment:** Fully hot-dipped galvanised (after welding).



#### DIMENSIONS (W\*H)

740 x 400 mm (29.1" x 15.7" )



### ■ POLE AND COLUMN PROTECTORS

**Material:** Mild steel tube.

**Surface Treatment:** Fully hot-dipped galvanised (after welding).

**Available Finishing Treatment:** Anti-UV powder coating.



#### TYPE DIMENSIONS (L\*W\*H)

Surface mounted	600 x 600 x 500 mm (23.6" x 23.6" x 19.7" )
Embedded	600 x 600 x 680 mm (23.6" x 23.6" x 26.8" )



### ■ LAMP POST PROTECTOR HOOPS

**Material:** Mild steel tube.

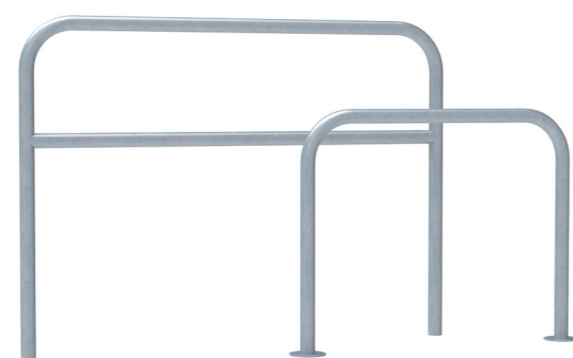
**Surface Treatment:** Fully hot-dipped galvanised (after welding).

**Available Finishing Treatment:** Anti-UV powder coating.



#### TYPE DIMENSIONS (H\*W)

Surface mounted	690 x 560 mm (27.2" x 22")
Embedded	870 x 560 mm (34.3" x 22")



### ■ HOOPED PERIMETER BARRIERS

**Material:** Mild steel tube / Pre hot-dip galvanised steel tube.

**Crossbar Option:** With crossbar / Without crossbar.

**Surface Treatment:** Fully hot-dipped galvanised (after welding).

**Available Finishing Treatment:** Anti-UV powder coating.

TYPE	LENGTHS	HEIGHT
Embedded	1000, 1500, 2000 mm (39.4", 59", 79")	1300 mm (51.2")

TYPE	LENGTHS	HEIGHT
Surface mounted	1000, 1500, 2000 mm (39.4", 59", 79")	1000 mm (39.4")

# Traffic Control Equipment

TRAFFIC SAFETY CONES.....	20
METAL ROADWORKS BEACONS (K5B).....	22
PLASTIC ROADWORKS BEACONS (K5C) .....	22
SCANDINAVIAN DELINEATOR PANELS.....	23
BALLAST SANDBAGS.....	23
EXPANDABLE STEEL BARRIERS.....	24
MANHOLE SAFETY BARRIERS .....	24

## TRAFFIC SAFETY CONES



### MAXI GRIP HANDLE

Handle with groove and textured grip for easy, efficient use, even with gloves.



### FILM PROTECTION

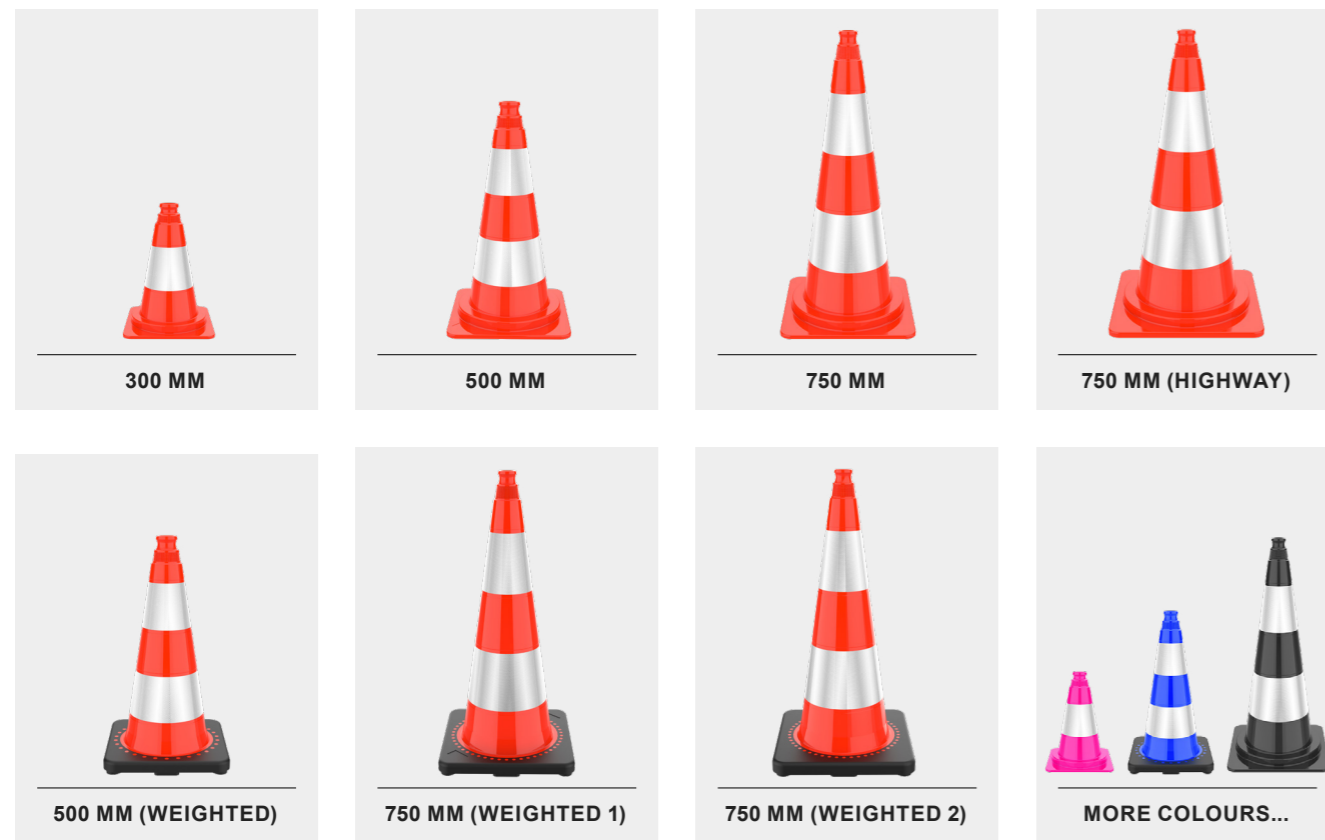
Reflective films are embedded with a 1 mm recess to prevent tearing.



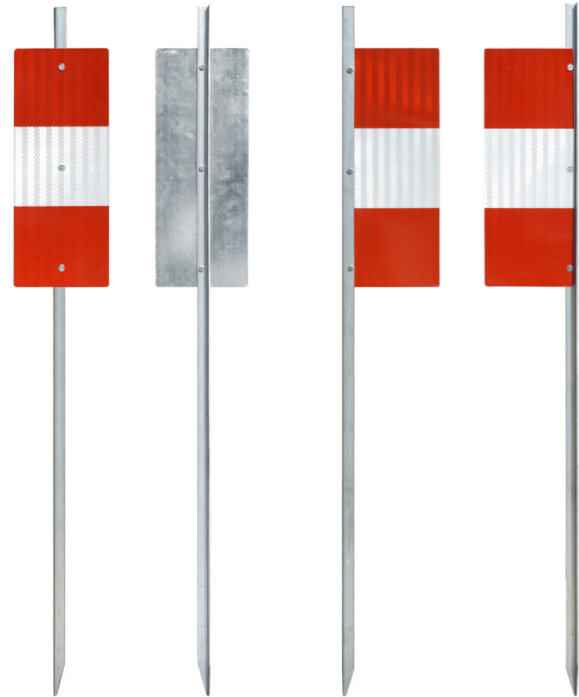
### UNIQUE STACKING SYSTEM

Cone trunks stack apart, preventing sticking and protecting reflective films.

TYPE	HEIGHT	BASE	REFLECTIVE SHEETING HEIGHT	WEIGHT
300 mm	300 mm (11.8")	215 x 215 mm (8.5" x 8.5")	100 mm (3.9") x 1	0.5 kg (1.1 lbs)
500 mm	500 mm (19.7")	275 x 275 mm (10.8" x 10.8")	100 mm (3.9") x 2	1.1 kg (2.4 lbs)
500 mm (weighted)	500 mm (19.7")	275 x 275 mm (10.8" x 10.8")	100 mm (3.9") x 2	1.8 kg (4 lbs)
750 mm	750 mm (29.5")	350 x 350 mm (13.8" x 13.8")	150 mm (5.9") x 2	2 kg (4.4 lbs)
750 mm (weighted 1)	750 mm (29.5")	350 x 350 mm (13.8" x 13.8")	150 mm (5.9") x 2	3.2 kg (7.0 lbs)
750 mm (weighted 2)	750 mm (29.5")	365 x 365 mm (14.4" x 14.4")	150 mm (5.9") x 2	4.2 kg (9.3 lbs)
750 mm (highway)	750 mm (29.5")	400 x 400 mm (15.7" x 15.7")	150 mm (5.9") x 2	4.2 kg (9.3 lbs)



### METAL ROADWORKS BEACONS (K5B)



- HIGHLY REFLECTIVE SHEETINGS**  
Engineering-Grade (RA1)  
High-Intensity Prismatic Grade (RA3).
- GALVANISED STEEL ANGLE & PLATE**  
Ensures durability and corrosion resistance.
- REINFORCED STEEL RIVETS**  
To avoid any break, even after intensive and tough uses.
- ANGLED END**  
Allows fast and easy installation, even on hard ground.

HEIGHT	GALVANISED STEEL ANGLE	GALVANISED STEEL PLATE
1100 mm (43")	20 x 15 mm (0.78" x 0.59")	150 x 375 mm (5.9" x 14.7")

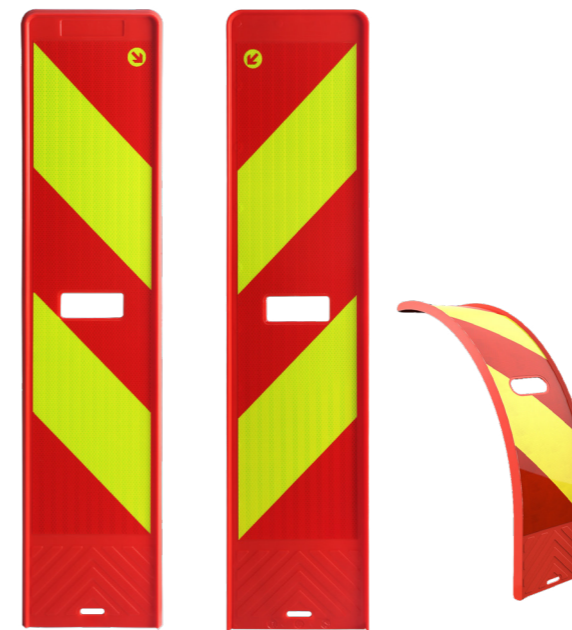
### PLASTIC ROADWORKS BEACONS (K5C)



- CONVENIENT HANDLE**  
Stays in place when stacked, easy to store.
- HIGHLY REFLECTIVE SHEETINGS**  
Engineering-Grade (RA1)  
High-Intensity Prismatic Grade (RA3).
- DIRECTIONAL ARROW**  
Will help you to position the beacon in the correct direction.
- COMPANY NAME OR LOGO**  
Can be moulded-in for easy identification.

MATERIAL	DIMENSIONS (H*W*T)	REFLECTIVE SHEETING DIMENSIONS
Virgin high-density polyethylene (HDPE), white	1300 x 280 x 60 mm (51" x 11" x 2.4")	1000 x 250 mm (39" x 10")
Recycled high-density polyethylene (HDPE), grey	1300 x 280 x 60 mm (51" x 11" x 2.4")	1000 x 250 mm (39" x 10")

### SCANDINAVIAN DELINEATOR PANELS



- HIGHLY REFLECTIVE SHEETINGS**  
Fluo Engineering-Grade (RA1)  
Fluo High-Intensity Prismatic Grade (RA3).
- DIRECTIONAL ARROW**  
Will help you to position the beacon in the correct direction.
- CONVENIENT HANDLE**  
Easy to carry and to install.
- SAVE PACKING STORAGE**  
Stackable design saves space, prevents slipping, and keeps beacons organised.

MATERIAL	DIMENSIONS (H*W*T)	REFLECTIVE SHEETING DIMENSIONS
Polypropylene (PP)	1000 x 225 x 22 mm (39.5" x 8.85" x 0.87")	800 x 190 mm (31.5" x 7.5")

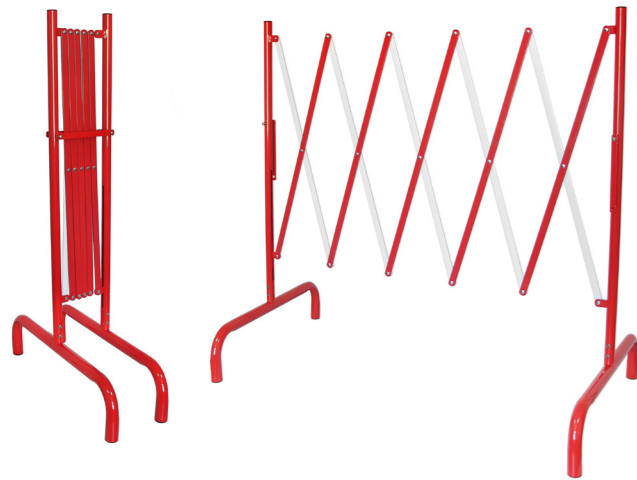
### BALLAST SANDBAGS



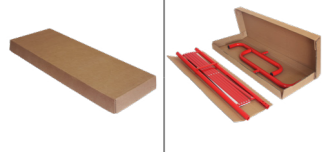
- DOUBLE-STITCHED SEAMS**  
Strong stitching for long-lasting use.
- HEAVY-DUTY ROPE**  
Easy to carry and to handle.
- 8 ALUMINIUM EYELETS**  
Corrosion-resistant aluminium for a longer lifespan.
- COMPANY NAME OR LOGO**  
Screen print custom logos for customisation.

MATERIAL	DIMENSIONS (L*W)	DENSITY	CAPACITY
PVC-coated fabric	600 x 400mm (24" x 15")	640 g/m <sup>2</sup>	15 kg (33 lbs) – delivered empty

## EXPANDABLE STEEL BARRIERS



PACKAGE:



**SEAMLESS, STRONG WELD**  
Strong welding to prevent cracks.



**REINFORCED STEEL RIVETS**  
To avoid any break, even after intensive and tough uses.



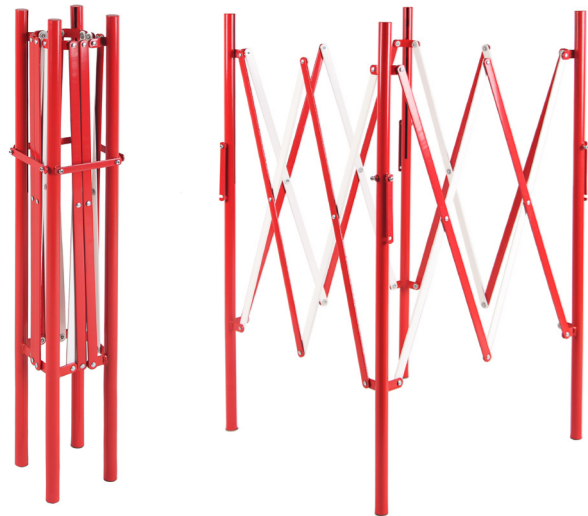
**INTERLOCKING SYSTEM**  
For an easy transportation and storage.



**ANTI-SLIP FEET**  
Improves stability and protects the floor.

HEIGHT	LENGTH	FINISHING TREATMENT
1000 mm (39")	Folded: 200 mm (8"), Unfolded: 2.85 m (9')	Anti-UV powder coating

## MANHOLE SAFETY BARRIERS



PACKAGE:



**SEAMLESS, STRONG WELD**  
Strong welding to prevent cracks.



**REINFORCED STEEL RIVETS**  
To avoid any break, even after intensive and tough uses.



**INTERLOCKING SYSTEM**  
For an easy transportation and storage.



**ANTI-SLIP FEET**  
Improves stability and protects the floor.

HEIGHT	LENGTH & WIDTH	FINISHING TREATMENT
1000 mm (39")	Folded: 150 x 150 mm (6" x 6"), Unfolded: 1.5 x 1.5 m (4.9' x 4.9')	Anti-UV powder coating

# Event Management

CABLE RAMPS .....	26
AMS CABLE RAMP.....	28
CABLE PROTECTOR RAMPS - 1200MM .....	30
HOSE PROTECTOR RAMPS.....	30
DROP OVERS .....	31
FLOOR CABLE COVERS .....	31
CROWD CONTROL BARRIERS.....	32
CROWD BARRIER STILLAGE.....	32

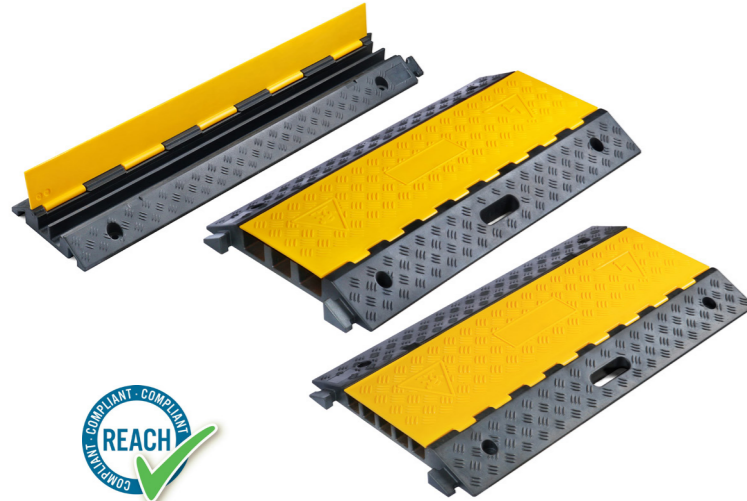
## ■ CABLE RAMPS

### Material of the base:

- 1. Standard version:** Plastic-Rubber composite as a more economical option.
- 2. Heavy-duty version:** Vulcanised rubber for flexibility and durability.

Both are REACH compliant, odourless, and built to last.

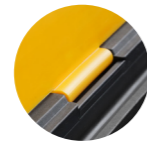
### 45° CORNER SECTIONS:



TYPE	DIMENSIONS (L*W*H)	CHANNEL DIMENSIONS (W*H)
2 Channels	990 x 240 x 45 mm (39" x 9.5" x 1.8")	30 x 32 mm (1.18" x 1.26")
3 Channels	900 x 500 x 70 mm (35.5" x 20" x 2.75")	65 x 50 mm (2.56" x 1.97") x 2, 56 x 50 mm (2.2" x 1.97")
5 Channels	900 x 500 x 50 mm (35.5" x 20" x 2")	38 x 32 mm (1.5" x 1.26")



**THICK YELLOW LID**  
UV-stabilised PE with a non-slip surface to reduce tripping risks.



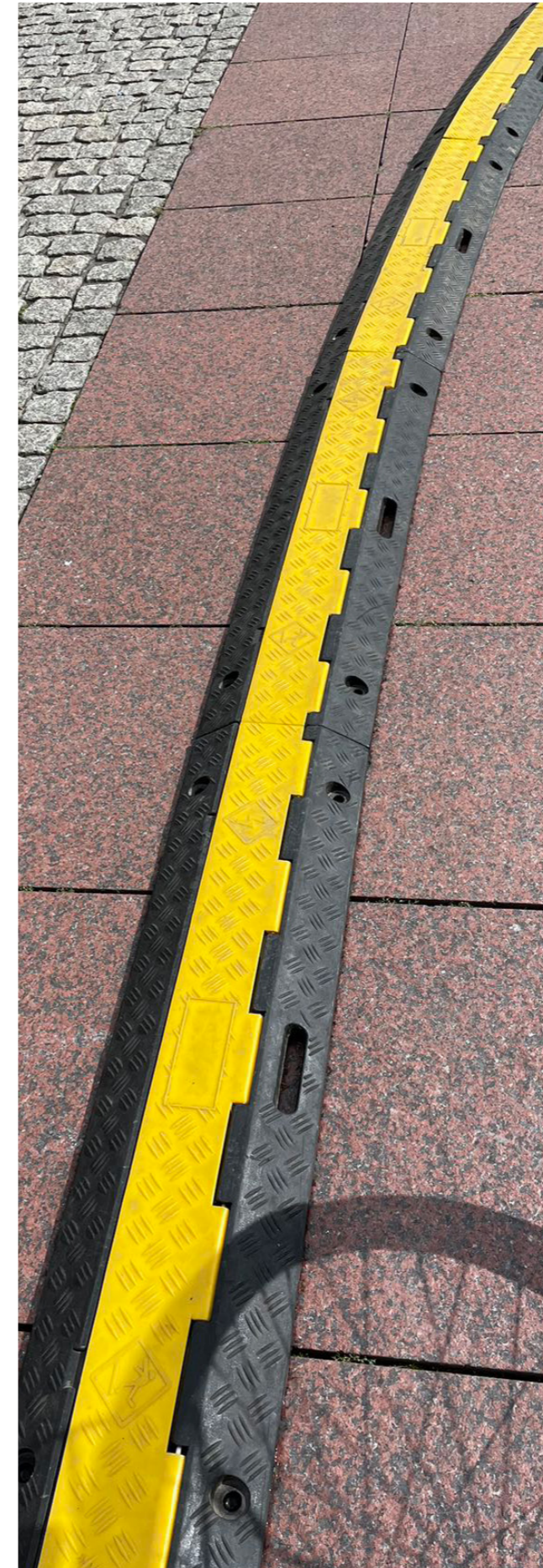
**REINFORCED STRUCTURE**  
Premium material to reinforce key stress points like hinges and connectors.



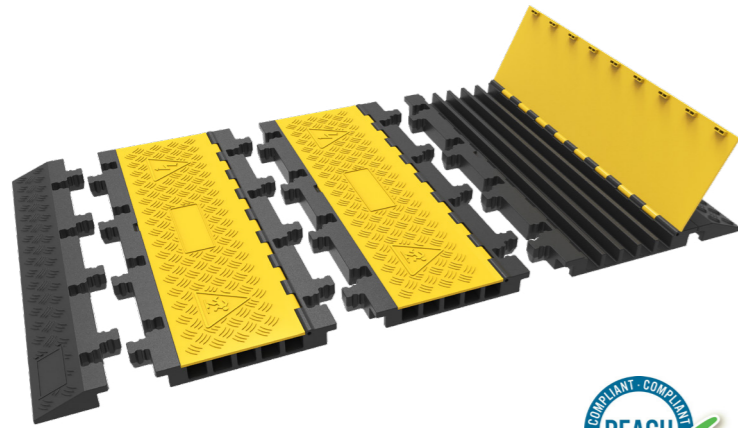
**45° LEFT TURN / RIGHT TURN (2, 3 AND 5 CHANNELS)**  
Helps create right or left turns, keeping walking spaces safe.



**INTERLOCKING SYSTEM**  
Easy to install and use, with no risk of disconnecting during operation.



## AMS CABLE RAMP

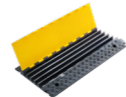


### Material:

- 1. Base & Ramps:** Vulcanised rubber for flexibility and durability.
- 2. Cover:** UV-resistant polyethylene cover to endure extreme weather conditions and sunlight exposure.

REACH compliant, odourless, and built to last.

### COMPATIBLE PRODUCT / ACCESSORIES:

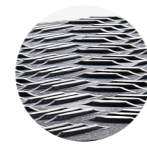


5 Channels Cable ramp



Rubber H-Connectors

TYPE	DIMENSIONS (L*W*H , EXCLUDING CONNECTORS)	CHANNEL DIMENSIONS (W*H)
Middle section	895 x 370 x 50 mm (35.2" x 14.6" x 2")	37.5 x 35 mm (1.48" x 1.38")
Standard ramp	895 x 140 x 50 mm (35.2" x 5.5" x 2")	/
Gentle slope ramp	895 x 500 x 50 mm (35.2" x 19.7" x 2")	/
Half gentle slope ramp	447.5 x 500 x 50 mm (17.6" x 19.7" x 2")	/



### SKIDPROOF SURFACE

Non-slip surface for better grip.



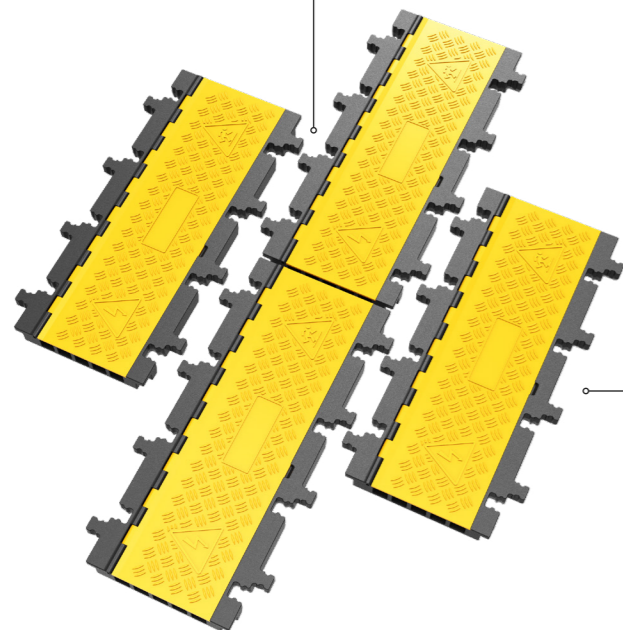
### GENTLE SLOPE RAMP

5° incline for smooth and easy access for wheelchairs and pedestrians.



### INTERLOCKING SYSTEM

Easy to install and use, with no risk of disconnecting during operation.

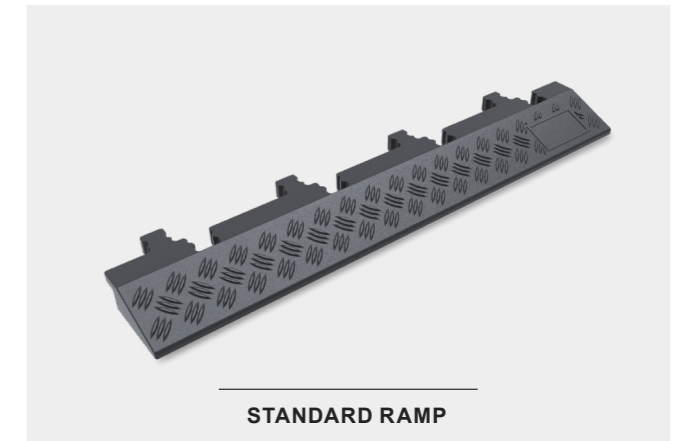


### FLEXIBLE MODULAR DESIGN

The AMS cable ramp allows for easy and flexible assembly to suit various needs.



MIDDLE SECTION



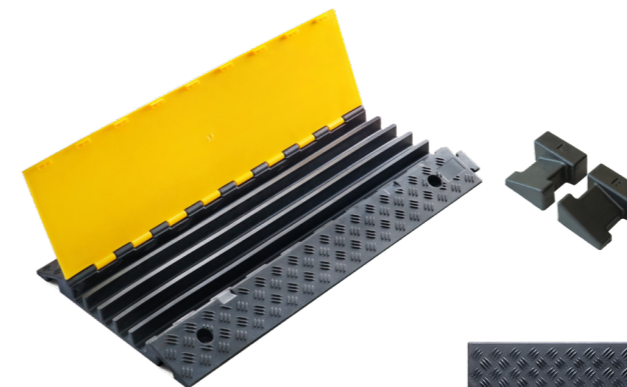
STANDARD RAMP



HALF GENTLE SLOPE RAMP



GENTLE SLOPE RAMP



### COMPATIBLE WITH 5-CHANNEL CABLE RAMP

The middle AMS cable ramp seamlessly connects with our 5-channel cable ramps using H-Connectors, ensuring a secure and continuous cable protection system.



## ■ CABLE PROTECTOR RAMPS - 1200MM



**SKIDPROOF SURFACE**  
Non-slip surface for better grip.



**CABLE COVER BASE**  
Designed to receive two cables up to Ø 20 mm (Ø 0.8") and one cable up to Ø 40 mm (Ø 1.6").



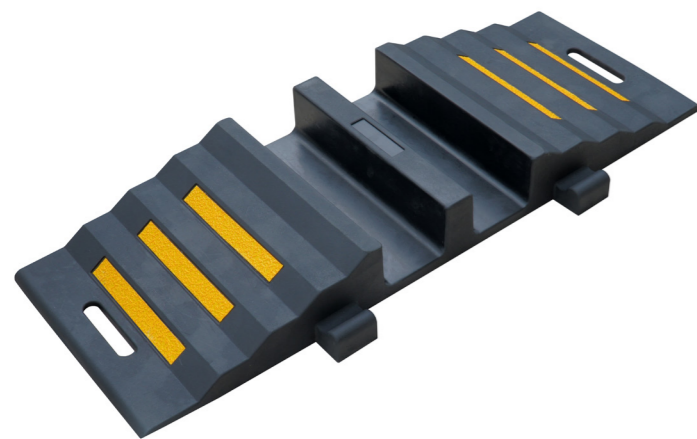
**COMPANY NAME OR LOGO**  
Can be moulded-in for easy identification.



**CUSTOM-MADE PACKING**  
Designed for international shipping and easy storage and delivery.

DIMENSIONS (L*W*H)	MAX. CABLE DIAMETER
1200 x 200 x 60 mm (47" x 8" x 2.5")	1 x Ø 42 mm (Ø 1.65") and 2 x Ø 20 mm (Ø 0.8")

## ■ HOSE PROTECTOR RAMPS



**BUILT-IN HANDLE**  
Easy to transport and reduces fatigue, saving time during installation and storage.



**THERMOPLASTIC REFLECTIVE ROAD MARKING FILMS**  
Embedded thermoplastic reflective road marking films to enhance visibility and safety.



**INTERLOCKING SYSTEM**  
Easy to install and use, with no risk of disconnecting during operation.



**CUSTOM-MADE PACKING**  
Designed for international shipping and easy storage and delivery.

DIMENSIONS (L*W*H)	CHANNEL DIMENSIONS (W*H)	MAX. WEIGHT CAPACITY
850 x 300 x 85 mm (33" x 12" x 3.3")	90 x 70 mm (3.54" x 2.76")	9,000 kg (20,000 lbs) per axle

## ■ DROP OVERS



**SKIDPROOF SURFACE**  
Non-slip surface for better grip.



**MADE OF POLYURETHANE**  
Flexible material that perfectly fits uneven floors.



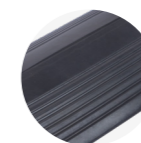
**INTERLOCKING SYSTEM**  
Easy to install and use, with no risk of disconnecting during operation.



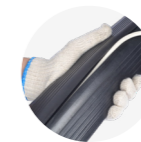
**ANTI-SLIP PADS**  
Improves grip on smooth surfaces.

TYPE	DIMENSIONS (L*W*H)	CHANNEL DIMENSIONS (W*H)
Small	914 x 135 x 22 mm (36" x 5.25" x 0.87")	40 x 14 mm (1.57" x 0.55")
Large	914 x 280 x 40 mm (36" x 11" x 1.57")	104 x 30 mm (4" x 1.25")

## ■ FLOOR CABLE COVERS



**SKIDPROOF SURFACE**  
Non-slip surface for better grip.



**1 CHANNEL - TOP SLIT**  
To install the cable from the top.



**3 CHANNELS - TOP & BOTTOM SLIT**  
To install the cable from the top & bottom.

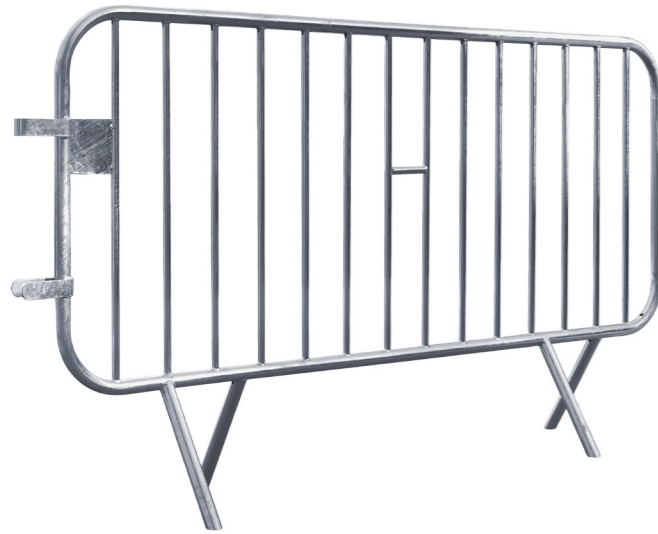


**CUSTOM-MADE PACKING**  
Designed for international shipping and easy storage and delivery.

TYPE	DIMENSIONS	MAX. CABLE DIAMETER
1 Channel	10,000 x 100 x 30 mm (33' x 4" x 1.2")	Ø 20 mm (Ø 0.8")
3 Channels	4,000 x 160 x 50 mm (13' x 6" x 2")	1 x Ø 40 mm (Ø 1.6") and 2 x Ø 20 mm (Ø 0.8")



## ■ CROWD CONTROL BARRIERS



**SEAMLESS, STRONG WELD**  
Strong welding to prevent cracks.



**HOT-DIP GALVANISED FINISH (MINIMUM 80 MICRONS)**  
Highly corrosion-resistant treatment that prevents rust.



**PATENTED HANDLE**  
Allows carrying two barriers at once (unique on the market).



**REINFORCED INTERLOCKING SYSTEM**  
Extra-thick 5 mm connectors for strong and stable use.

TYPE	DIMENSIONS (L*H)	TUBE DIAMETERS
Crowd Barrier - 1 Metre	1000 x 1090 mm (39" x 43")	Frame: Ø 32 mm (Ø 1.3"), 6 Inner rails: Ø 16 mm (Ø 0.6")
Crowd Barrier - 2 Metres	2000 x 1090 mm (79" x 43")	Frame: Ø 32 mm (Ø 1.3"), 14 Inner rails: Ø 16 mm (Ø 0.6")



## ■ CROWD BARRIER STILLAGE



**SEAMLESS, STRONG WELD**  
Strong welding to prevent cracks.



**HOT-DIP GALVANISED FINISH (MINIMUM 80 MICRONS)**  
Highly corrosion-resistant treatment that prevents rust.



**SINGLE LOCK SYSTEM**  
Simple and effective, prevents the loss of crowd control barriers.



**STACKING SYSTEM**  
Stable stacking for easy management.

✂ APPLICABLE PRODUCTS:



DIMENSIONS (L*W*H)	CONTAINS
980 x 910 x 1200 mm (38.6" x 35.8" x 47.2")	20 Pieces of crowd barriers





FRENCH-OWNED COMPANY  
WITH MANUFACTURING OPERATIONS IN CHINA

## THANK YOU FOR YOUR INTEREST IN OUR PRODUCTS!

For more products and details, please visit our website:

<https://www.sinoconcept.co.uk>



### MAIN OFFICE (CHINA):

27 Ping Xiang Road, Shibe District,  
Shui Xiang Yuan,  
Building 6, Unit 3, Door 102  
266011 Qingdao, China

Phone number: 0086 532 8561 1600

### WRITE US

[contact@sinoconcept.co.uk](mailto:contact@sinoconcept.co.uk)